

# The Smart Electro-Mechanical Lubrication Unit



## LUBCON® DuoMax 160

Long-term solution for maintenance free electrical motor operation. The electro-mechanical lubricator eliminates most common bearing failures caused by e.g. over lubrication, under lubrication, contamination or accidental mixing of incompatible lubricants.



**ONE Device TWO Outlets**

**Reliable**

**Cost Saving**

- Precise lubrication system with two outlets for maintenance-free operation of modern electric motors
- Optimum grease supply to the bearings due to minimum quantity lubrication over a time period up to three years
- Prevents over lubrication of lubricating points occurring with conventional manual lubrication

# LUBCON® DuoMax 160

## The Smart Electro-Mechanical Lubrication Unit



### Modern Lubrication Providing Best Machine Performance and Reliability

#### ■ Economical

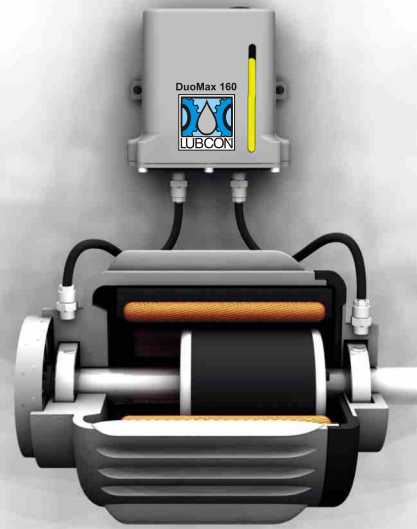
- ✓ long-term lubrication on two lubrication points
- ✓ easy installation and activation
- ✓ optimal metering of the lubricant
- ✓ combination of high-performance lubricants and intelligent lubrication device
- ✓ battery driven, no external power needed

#### ■ Robust and Reliable

- ✓ closed metal housing
- ✓ completely sealed unit
- ✓ performs in extreme environmental conditions (dust, water, heat)
- ✓ installation in any position
- ✓ resistant to shock and vibration

#### ■ Lubrication Over Long Periods

- ✓ individually adjustable operating time
- ✓ possible operating range up to 36 months
- ✓ lubrication device for minimum quantities  
e. g. at 3 years operating time: 26.6 cm<sup>3</sup> per year and outlet



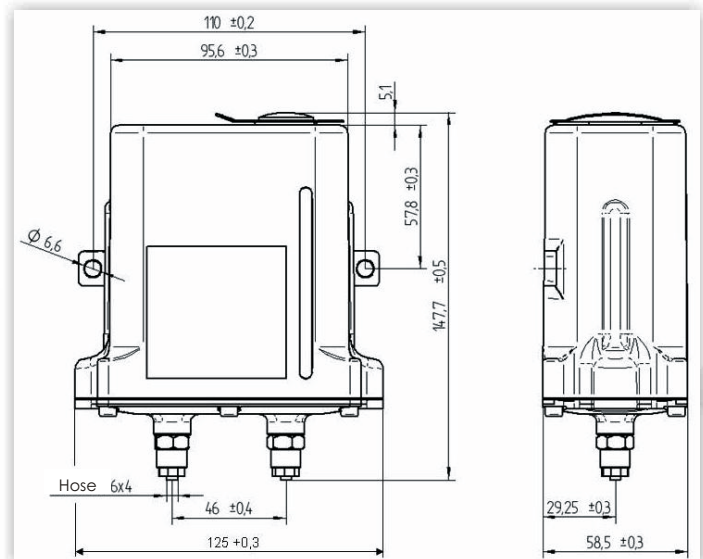
## LUBCON Lubrication Systems

The **DuoMax 160** is an electro-mechanical lubricator for automatic lubrication on two lubrication points with grease or oil. The aluminum body of the **DuoMax 160** contains two sealed and unpressurized cartridges filled with 160 cm<sup>3</sup> lubricant. Two progressive advancing pistons push the lubricant through two outlets to the lubrication points. The forward motion of the pistons is generated by a geared motor and a spindle drive.

The control of this motion and the activation and control of the gear motor is done by a micro processor. A fixed, non-removable lithium battery supplies the electronic circuit and the motor with energy. The maximum operating time of the **DuoMax 160** is 3 years.

Technical Data	DuoMax 160
Lubricant volume	160 cm <sup>3</sup> (2 x 80 cm <sup>3</sup> )
Feed rate	0,08 cm <sup>3</sup> /stroke
Operating time	individual up to 36 months
Suitable lubricants	oils, greases up to NLGI class 2
Dimensions (D x L)	125 mm x 148 mm (4.9" x 5.8")
Fitting	G 1/8"
Housing material	aluminum zinc die cast
Maximum length of tube	2 m (6 ft)
Recommended tube diameter	6 mm (outer diameter) 4 mm (inner diameter)
Ambient operating	-20 °C*) up to +70 °C -4 °F up to +158 °F
Maximum feed pressure	10 bar / 145 psi
Protection class	IP68
Drive	electro-mechanical
Weight without lubricant	500 g/17.6 oz

\*) Deep temperature limit is depending on the NLGI class



### LUBCON Service + Systems GmbH Lubrication Systems

Gutenbergstraße 13 · 63477 Maintal · GERMANY · P.O. Box 20 02 40 · 63469 Maintal · GERMANY  
Tel.: +49 6109 7650-7700 · Fax: +49 6109 7650-7755 · Email: [lub@lubcon.eu](mailto:lub@lubcon.eu) · [www.lubcon.eu](http://www.lubcon.eu)

This brochure only contains product information. For specific information please refer to our technical data and safety data sheets. The indications made represent the present state of development and knowledge of LUBCON Service + Systems GmbH which is subject to change without notification. The products are subject to severe controls of manufacture and comply in full with the specifications set forth by our company, but due to the multitude of different influencing factors, we cannot assume any warranty for the successful application in each individual case. Therefore, we recommend performing field tests. We strictly refuse any liability. The implementation of automatic lubrication systems does not discharge the user from the obligation to check regularly the lubrication points.